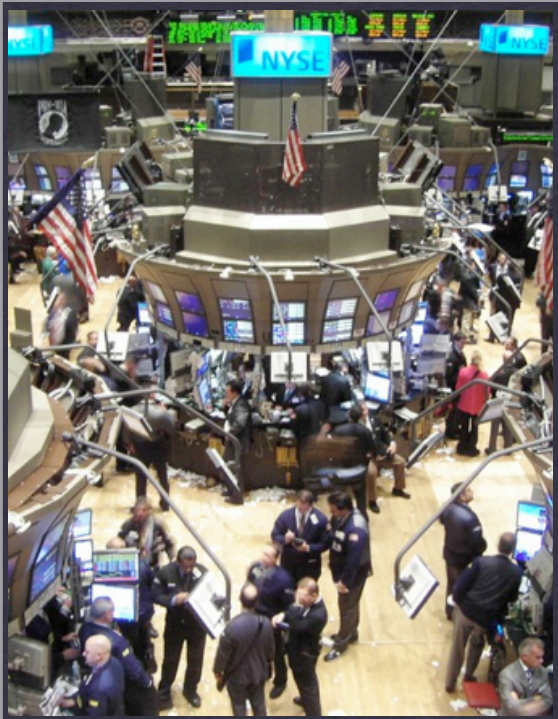


# SNA: Let's look at some application domains



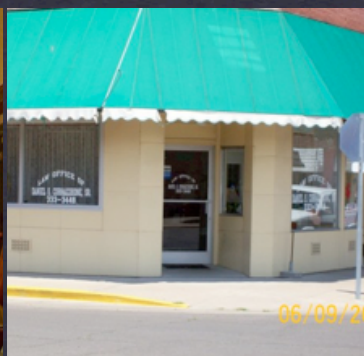
## POWER GENERATION FACILITIES

WHERE WOULD YOU START?



## WALL STREET

TRANSACTION SYSTEMS: WHERE WOULD YOU START?



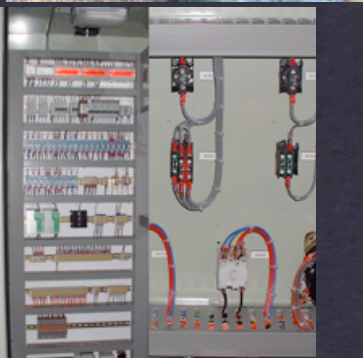
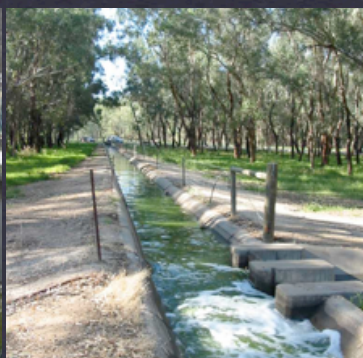
## LEGAL FIRM

NO ITS DEPARTMENT OVERSEEING THE OPERATION



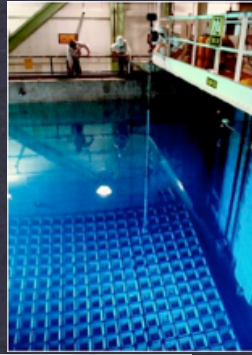
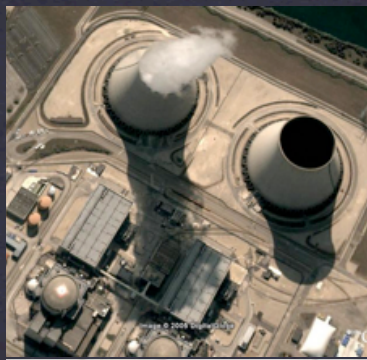
## MEDICAL FACILITY

WHAT QUESTIONS MAY ONE START WITH?



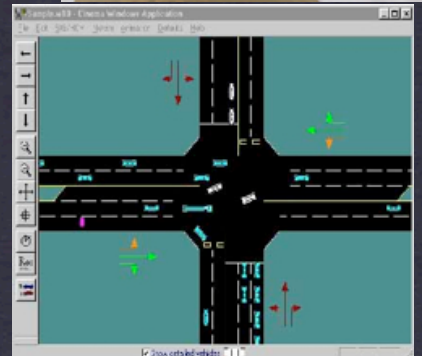
## WASTE WATER TREATMENT PLANT

HOW WOULD YOU START THE SNA PROCESS?



## NUCLEAR REACTOR CONTROL SYSTEM

THE APPLICATION IS VERY CRITICAL & SENSITIVE



## ITS: INTELLIGENT TRANSPORTATION SYSTEMS

WHAT COULD BE THE ISSUES HERE?